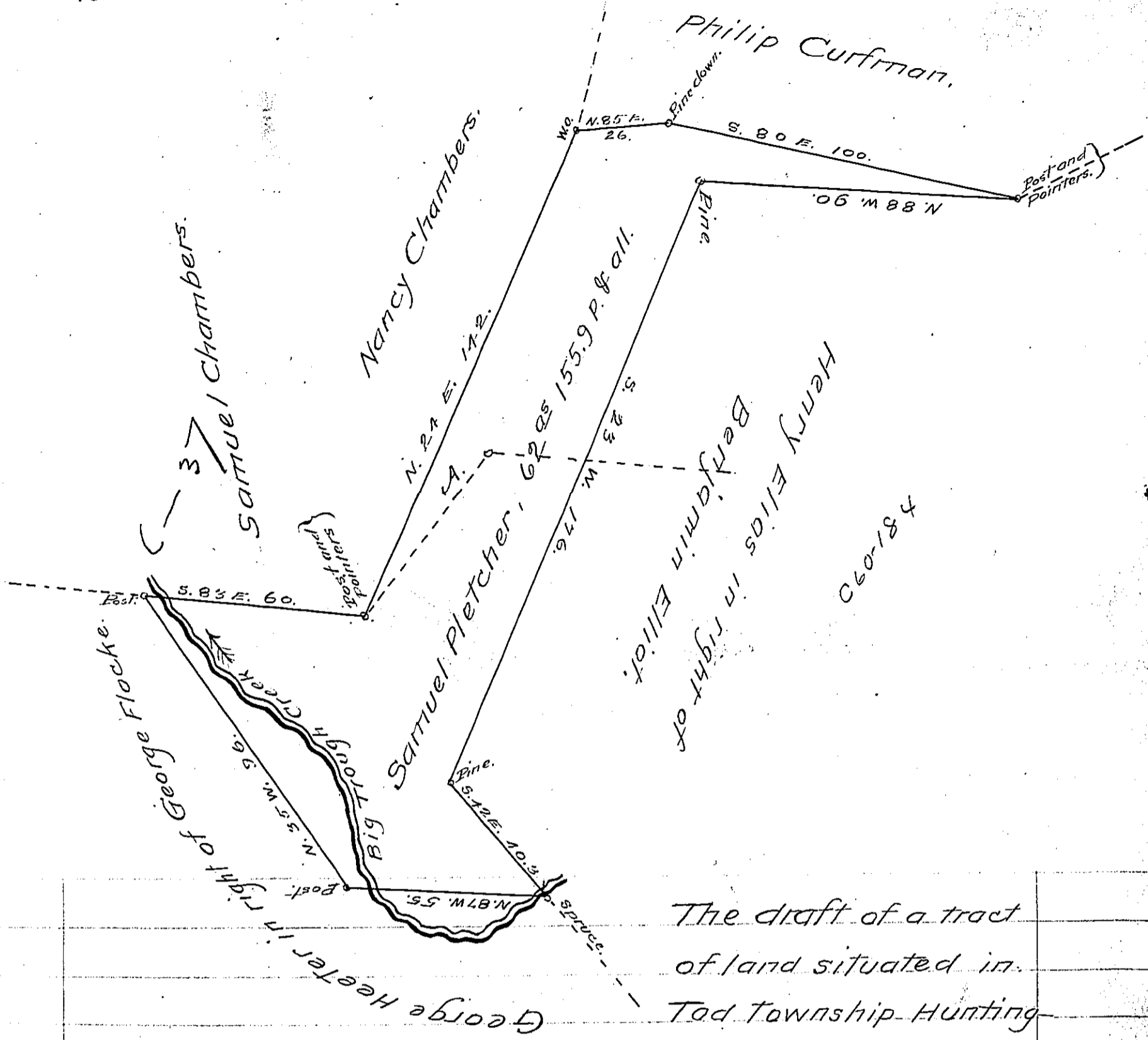


FORM No. 1.



The draft of a tract of land situated in Tad Township Huntingdon county containing sixty two acres and 155.9 perches and allowance of six per cent. for roads &c. In pursuance of a Warrant to Samuel Pletcher dated June 4th A.D. 1792, (said to have been surveyed June 10th 1792) surveyed June 20th 1854 by Gideon Elias.

J. Porter Brawley Esqr. } Pr. J. Simpson Africa
 Surveyor General. } Co. Sur.

Note - The Nancy Chambers survey, made in pursuance of a Warrant dated 18th day of March 1794 interferes with this survey probably as far as the dotted lines at "A".

IN TESTIMONY that the above is a copy of the original remaining on file in the Department of Internal Affairs of Pennsylvania, made conformably to an Act of Assembly approved the 16th day of February, 1833, I have hereunto set my Hand and caused the Seal of said Department to be affixed at Harrisburg, this Twenty seventh day of June 1906.

Isaac Brown
 Secretary of Internal Affairs.